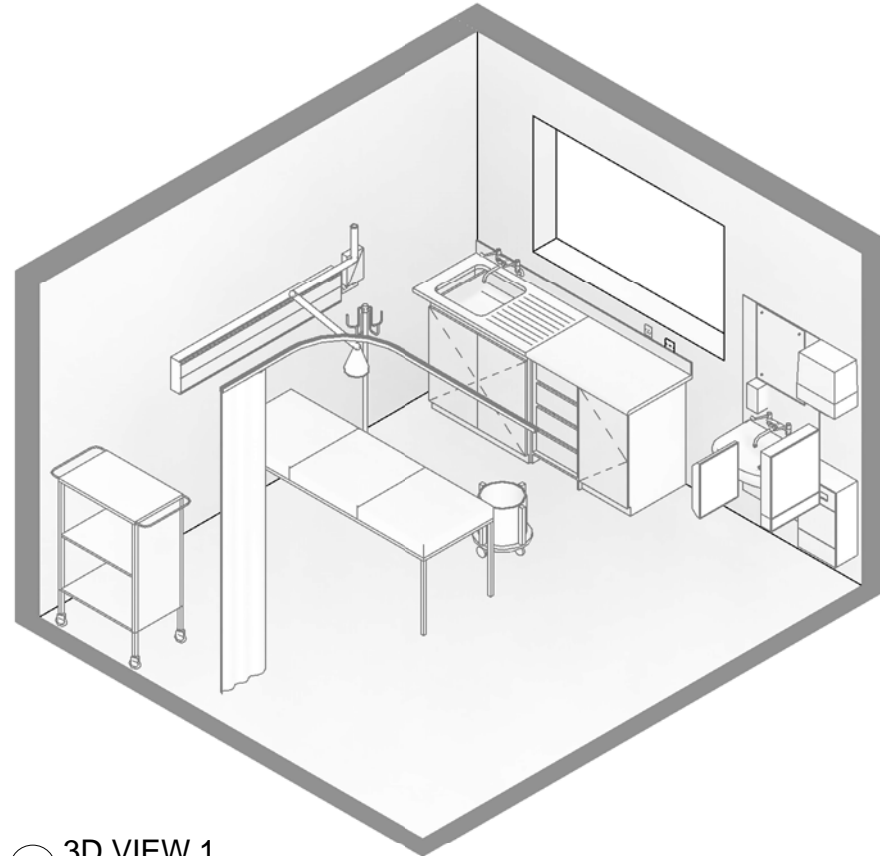


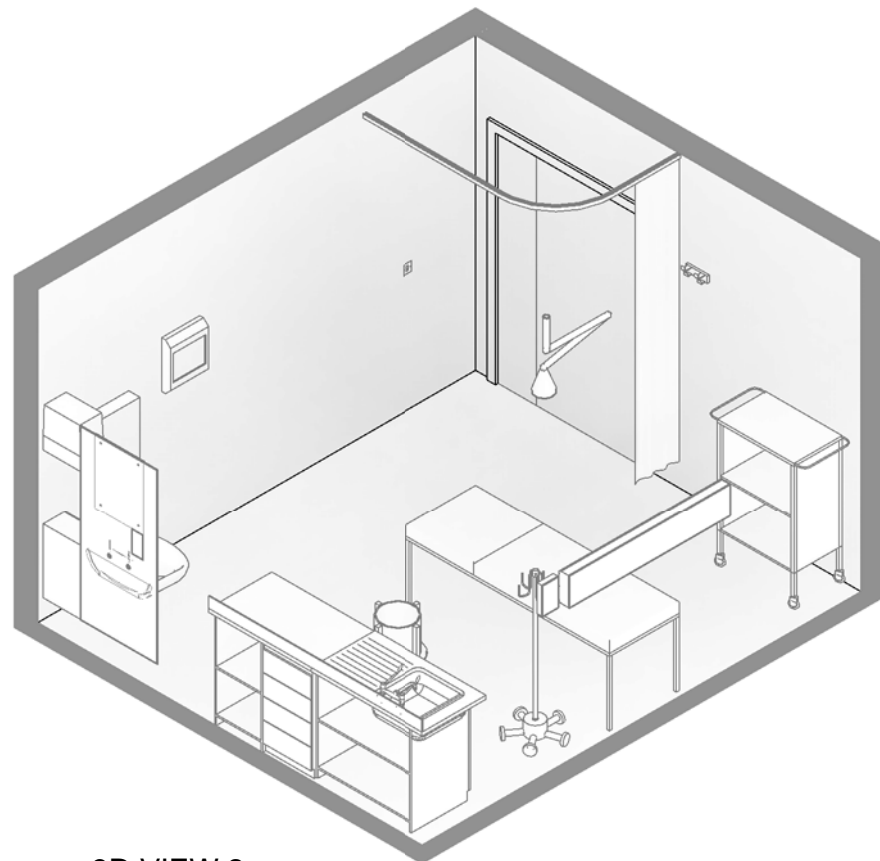
ROOM CODE	AJA
ARCH. CODE	G
ROOM AREA	15 m²

LEGEND

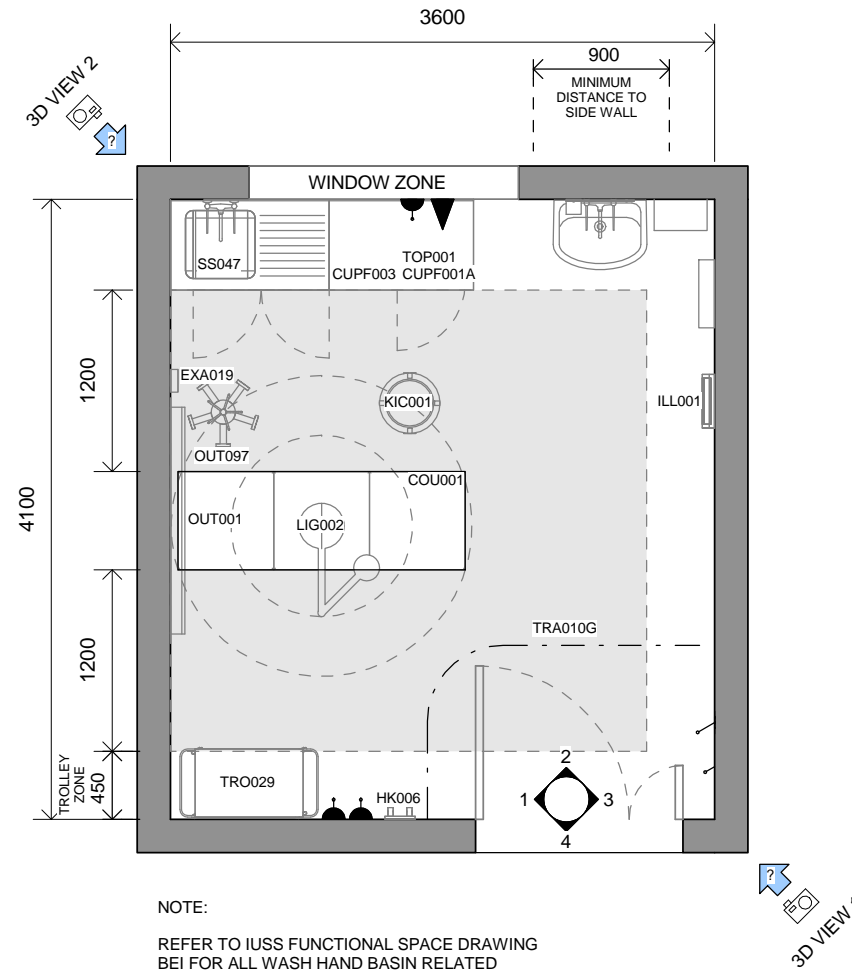
QTY	CODE	DESCRIPTION
1	COU001	COUCH, EXAMINATION/TREATMENT, (3 SECTION), 1900x650mm.
1	CUPF001A	450x560x880mm FLOOR CUPBOARD
1	CUPF003	450x550x880mm FLOOR DRAWER CUPBOARD
1	CUPF004	900x560x880mm FLOOR CUPBOARD
1	EXA019	SOCKET, DIAGNOSTIC EQUIPMENT.
1	HK006	HAT AND COAT HOOK (X2)
1	ILL001	X-RAY VIEWING SCREEN DIGITAL
1	KIC001	KICKABOUT
1	LIG002	LAMP CEILING MOUNTED
1	OUT001	HORIZONTAL BEDHEAD SERVICE TRUNK - HU10
1	OUT028	SINGLE LIGHT SWITCH - 1100AFFL
3	OUT030	OUTLET, POWER, SINGLE 16A - 400 AFFL
1	OUT058	TWO WAY SINGLE LIGHT SWITCH - 1400AFFL
1	OUT097	IV STAND
1	SAN006	TOWEL DISPENSER
1	SAN007	WASTE DISPOSAL BIN
1	SAN015	CLINICAL WASH HAND BASIN
1	SAN030	MIRROR (BASIN)
1	SAN102	DISPENSER, GLOVE AND APRON.
1	SS047	STAINLESS STEEL SINGLE END BOWL DROP-ON SINK (1050 x 535mm)
1	TOP001	POST FORMED FORMICA TOP WITH 100MM UPSTAND
1	TOP053	100MM x 16MM HIGH SPLASHBACK (FORMICA)
1	TRA010G	WARD CURTAIN TRACK
1	TRO029	TROLLEY, MOBILE 700 X 450 X 900



1 3D VIEW 1




2 3D VIEW 2



3 PLAN
1 : 50

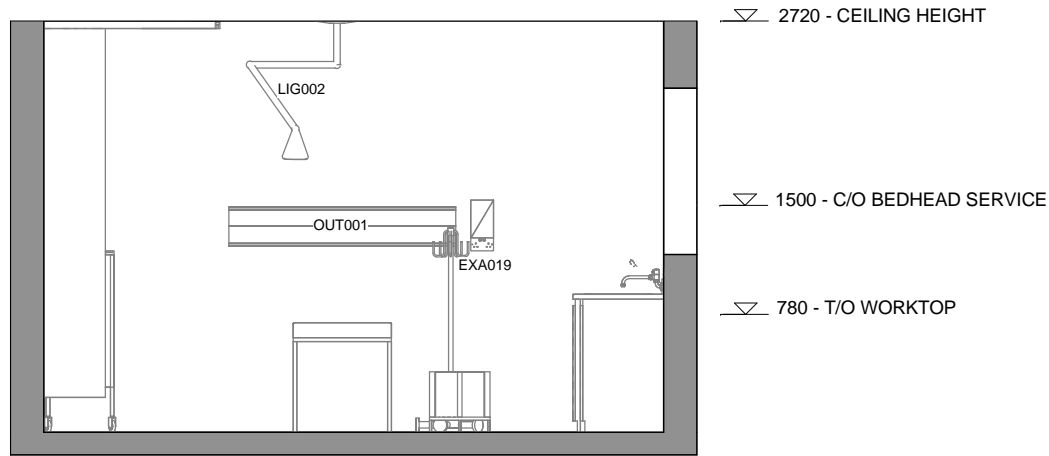
NOTES:
UNLESS SPECIFIED AS CRITICAL OR MINIMUM, ALL DIMENSIONS SHOWN ARE RECOMMENDED DISTANCES.
DRAWINGS ARE NOT TO SCALE, MAKE USE OF BAR SCALE FOR DIMENTIONING.
www.iussonline.co.za
0 1m 2m 3m

	ROOM NAME:	TREATMENT
	CUSTODIAN:	NDoH
	DRAWING:	SHEET 1 OF 2
	DATE:	2014/04/25
	STATUS DEVELOPMENT:	REVISION_01
	SCALE:	1 : 50 @ A3

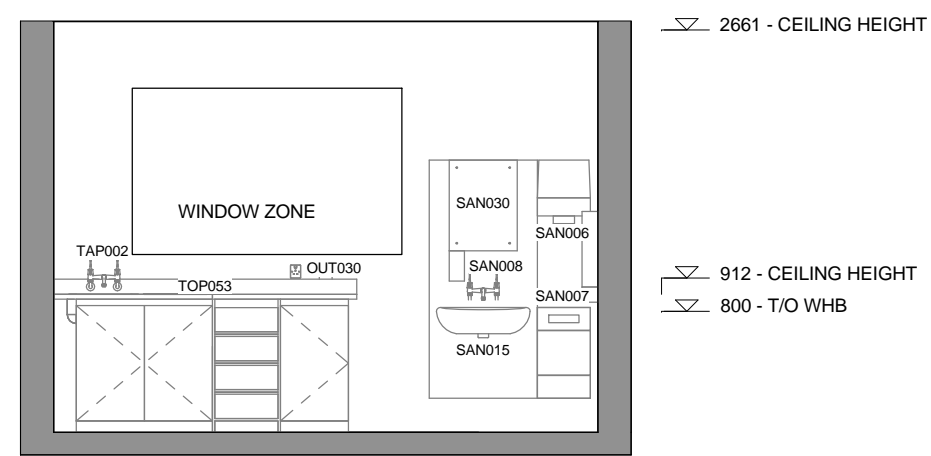
ROOM CODE	AJA
ARCH. CODE	G
ROOM AREA	15 m²

LEGEND

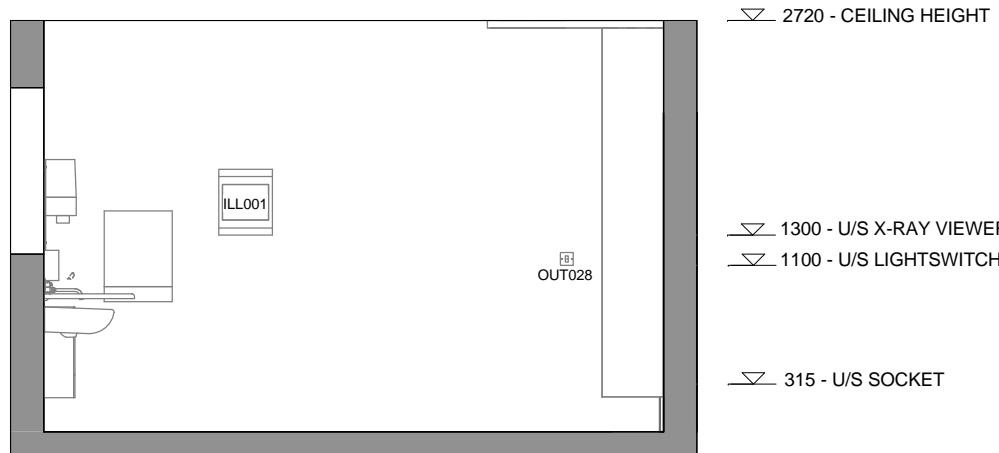
QTY	CODE	DESCRIPTION
1	COU001	COUCH, EXAMINATION/TREATMENT, (3 SECTION), 1900x650mm.
1	CUPF001A	450x560x880mm FLOOR CUPBOARD
1	CUPF003	450x550x880mm FLOOR DRAWER CUPBOARD
1	CUPF004	900x560x880mm FLOOR CUPBOARD
1	EXA019	SOCKET, DIAGNOSTIC EQUIPMENT.
1	HK006	HAT AND COAT HOOK (X2)
1	ILL001	X-RAY VIEWING SCREEN DIGITAL
1	KIC001	KICKABOUT
1	LIG002	LAMP CEILING MOUNTED
1	OUT001	HORIZONTAL BEDHEAD SERVICE TRUNK - HU10
1	OUT028	SINGLE LIGHT SWITCH - 1100AFFL
3	OUT030	OUTLET, POWER, SINGLE 16A - 400 AFFL
1	OUT058	TWO WAY SINGLE LIGHT SWITCH - 1400AFFL
1	OUT097	IV STAND
1	SAN006	TOWEL DISPENSER
1	SAN007	WASTE DISPOSAL BIN
1	SAN015	CLINICAL WASH HAND BASIN
1	SAN030	MIRROR (BASIN)
1	SAN102	DISPENSER, GLOVE AND APRON.
1	SS047	STAINLESS STEEL SINGLE END BOWL DROP-ON SINK (1050 x 535mm)
1	TOP001	POST FORMED FORMICA TOP WITH 100MM UPSTAND
1	TOP053	100MM x 16MM HIGH SPLASHBACK (FORMICA)
1	TRA010G	WARD CURTAIN TRACK
1	TRO029	TROLLEY, MOBILE 700 X 450 X 900



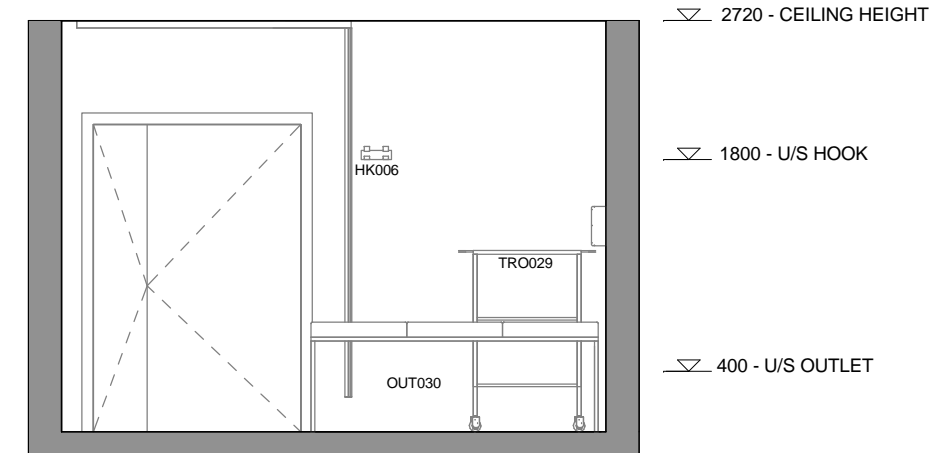
1 ELEVATION
1 : 50



2 ELEVATION
1 : 50




3 ELEVATION
1 : 50



4 ELEVATION
1 : 50

NOTES:
UNLESS SPECIFIED AS CRITICAL OR MINIMUM, ALL DIMENSIONS SHOWN ARE RECOMMENDED DISTANCES.
DRAWINGS ARE NOT TO SCALE, MAKE USE OF BAR SCALE FOR DIMENTIONING.
www.iussonline.co.za
0 1m 2m 3m

	ROOM NAME:	TREATMENT
	CUSTODIAN:	NDoH
	DRAWING:	SHEET 2 OF 2
	DATE:	2014/04/25
	STATUS DEVELOPMENT:	REVISION_01
	SCALE:	1 : 50 @ A3